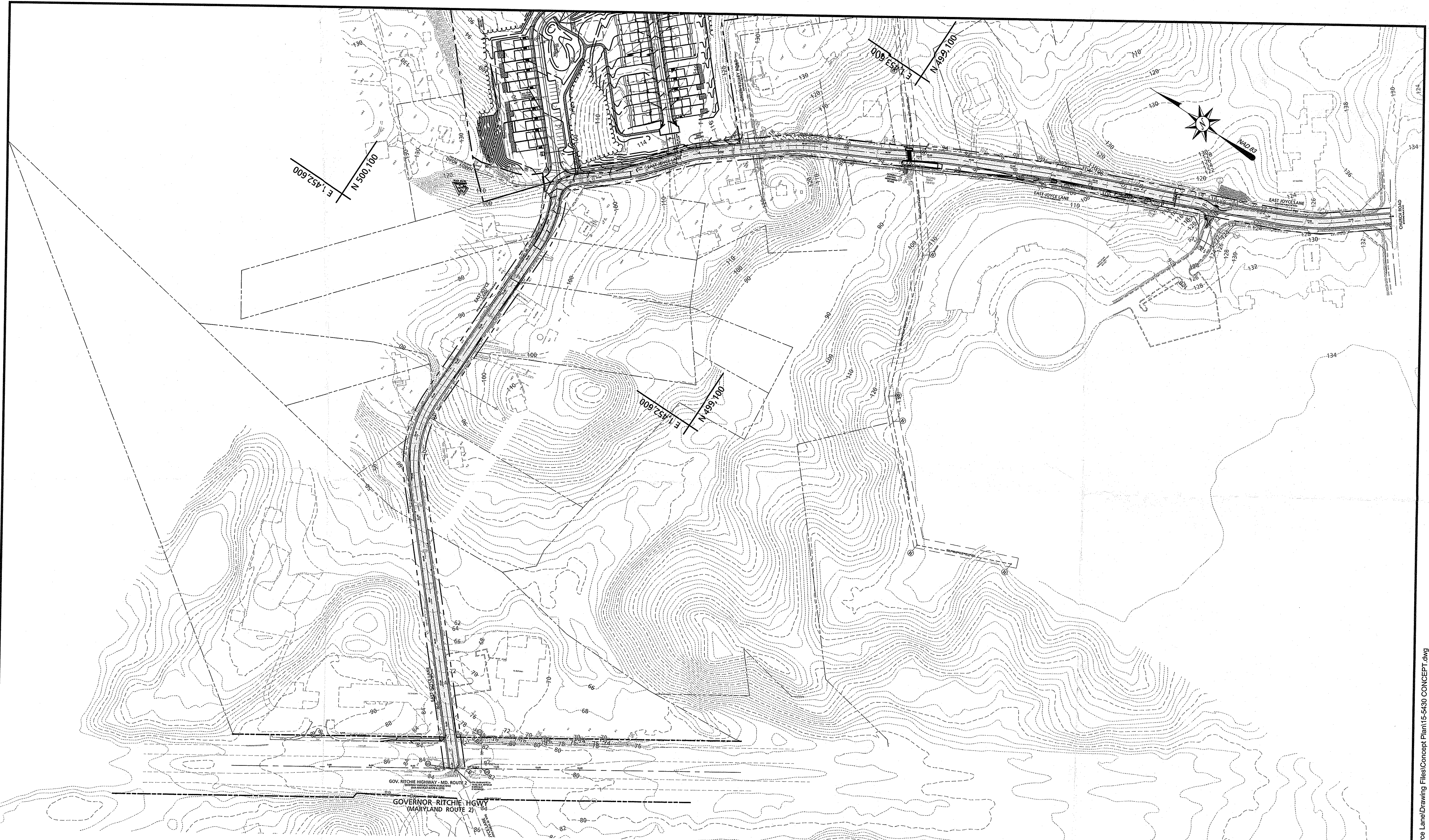


PLOTTED: Oct 27 2015 - 2:55pm  
 INCLUDED XREFS & IMAGES: 15-6430 BASE.dwg AAFORM-2SIGS.dwg 15-6430 EX-TOPO.dwg



**PLAN**  
 SCALE: 1" = 100'

Owner / Developer	No.	Date	Revision	By	Approved By

**Bay Engineering Inc.**  
 Engineers, Planners and Surveyors  
 2661 Riva Road, Building 600  
 Annapolis, Maryland 21401  
 410.897.8290  
 410.897.8295 fax  
 email: info@bayengineering.com  
 www.bayengineering.com



This drawing is to be prepared and used in accordance with the provisions of the Professional Engineering Act of 1997, Chapter 103, of the Code of Regulations of the State of Maryland. It is the responsibility of the engineer to ensure that the drawing is prepared in accordance with the provisions of the Act and the Code of Regulations. The engineer shall be held responsible for any errors or omissions in this drawing.

I hereby certify that these documents were prepared or approved by me, and that I am a duly licensed professional engineer under the laws of the State of Maryland.

**Terry Schuman** Date  
 19593 3/31/14  
 License No. Exp. Date

Revised		Approved	Date
Date	By		
		Chief, Engineer	
		Review Engineer	

Anne Arundel County Office Of Planning And Zoning	
Drawn By	Scale 1"=100'
Approved By	Sheet No. 1 Of 4
Job No.	Project No.
Date OCTOBER 2015	Proposal No.
Folder Ref.	Map No.

CONCEPT PLAN VIEW  
 PUBLIC ROAD PLANS  
 FOR  
**E. JOYCE LANE**  
 (FROM ARNOLD ELEMENTARY  
 SCHOOL TO MD ROUTE 2)  
 ARNOLD, MARYLAND 21012  
 THIRD DISTRICT - ANNE ARUNDEL COUNTY

F:\15-6430 Elm St Development East Joyce Lane\Drawing Files\Concept Plan\15-6430 CONCEPT.dwg